
MANUAL AND INSTRUCTION

WESTBO Classic electric



Please note and observe all warnings and safety notes. Always use original replacement parts. Ignoring these operating guidelines will void any liability and warranty entitlements.

**WARNING!**

This icon indicates a potentially dangerous situation. Ignoring this warning may result in serious injury or even death.

**CAUTION!**

This icon signals a possible hazardous condition. Failure to heed this caution could lead to property damage or personal injury.

**NOTE!**

Offers additional advice on operating the stove and provides helpful information.

**NOTE!****When receiving the stove**

When the stove is received it is important to check the goods to see that the stove is not damaged during transportation. Damages should be notified to the freight company immediately.



Cut the strap and remove the carton.

**CAUTION!**

When using an electric fireplace near a patient or child, pay attention to safety and take extra care.

**CAUTION!**

You must use a well grounded and fused socket. When the electric fireplace is in a heated state and objects are covered or covered at the air inlet, the heating components may be overheated.

At this time, the product overheat protection function will automatically cut off the input power.

After 8 - 10 minutes cooling down it is possible to restart the unit.

**CAUTION!****Floor protection**

Do not install the electric fireplace directly on a carpet or other similar surface that may prevent the air circulation under the product.

**CAUTION!**

After the electric fireplace is turned on and heated, the hot air outlet is at a high temperature. Do not place bedding, clothing, curtains, paper, etc. within 30 cm from the front of the electric fireplace and within 10 cm from the sides and back.

Do not place the electric fireplace in a humid environment, such as a laundry room, bathroom, etc.

When installing an electric fireplace, do not lay cables under carpets or flammables.

**NOTE****Product features**

The Westbo Carl is a traditional Swedish cast iron stove. In the past it was placed in small rooms or workplaces with little space and with the need for warmth. The handy stove is easy to place where the space is limited.

The simulated wood burning is made of environmentally friendly materials.

The surface treatment of sheet metal parts is made of high temperature resistant environmentally friendly plastic powder, and materials used are nontoxic and harmless and meets the environmental standards.

The flame is realistic, using coated glass tridimensional imaging, with a real sense of presence.

The infrared remote control is used to control each function, and at the same time, the auxiliary sound and light prompt function informs the user of the current working state.

The body of the stove is made from cast iron.



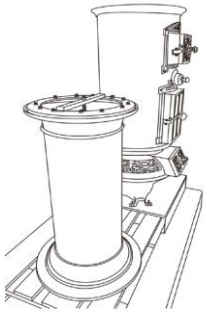


NOTE

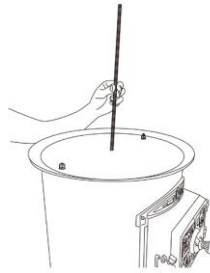
Including

- 1 pcs Electric fireplace
- 1 pcs Electric ceramic heaters
- 1 pcs Remote control
- 1 pcs Instruction
- 1 pcs Power cable

Unpack the product and follow steps below.



1. Stove upon arrival



2. Install the threaded rod



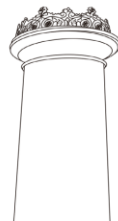
3. Put one of the large rings in place.



4. Place the cover on the stove.



5. Put on the thin ring.



6. Put on the next large ring and the crown.



7. Screw the angle profile in place



NOTE

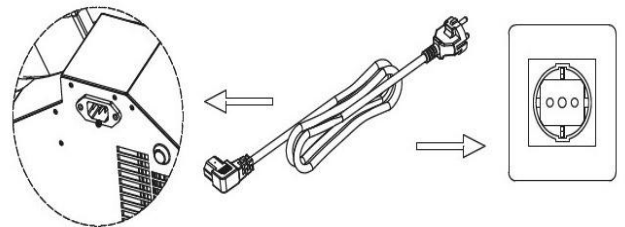
How to install.

Place the electric fireplace in a safe and suitable location and ensure a distance of more than 30cm from combustible at the front of the electric fireplace and within 10 cm from the side and back.

Plug the power cord into the socket at the bottom of the product to ensure that the power cord is not blocked or crushed.

Plug the power cord into a wall outlet rated min. 10A. When you hear a beep, it indicates that the power is on.

The power input method is shown in the following figure



NOTE

Remote control function



Turn on/off

Five levels of brightness, adjustment (5-4-3-2-1, cycle in turn)

Heater

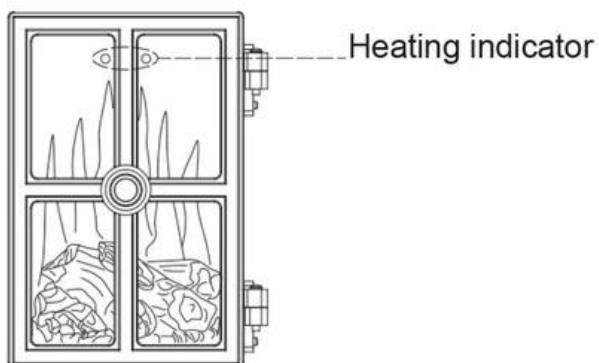
Low heat/high heat (press low heat once, high heat two times, turn off heat three times.)

Heater plate

Heating status display (press this key, the heating status indicator lights up, and automatically turns off after three seconds)

**NOTE****Heating functions**

- Low heat: Press the Heater button once, the internal buzzer of the product sounds "beep", then the flame screen lights up for 3 seconds and then goes out.
- High heat, press the Heater button twice, the product buzzer sounds three "beep", the red light on the flame screen lights up for 3 seconds and then goes out.
- The location of the low heat and high heat indicator lights is shown in the figure below.



Heating indicator

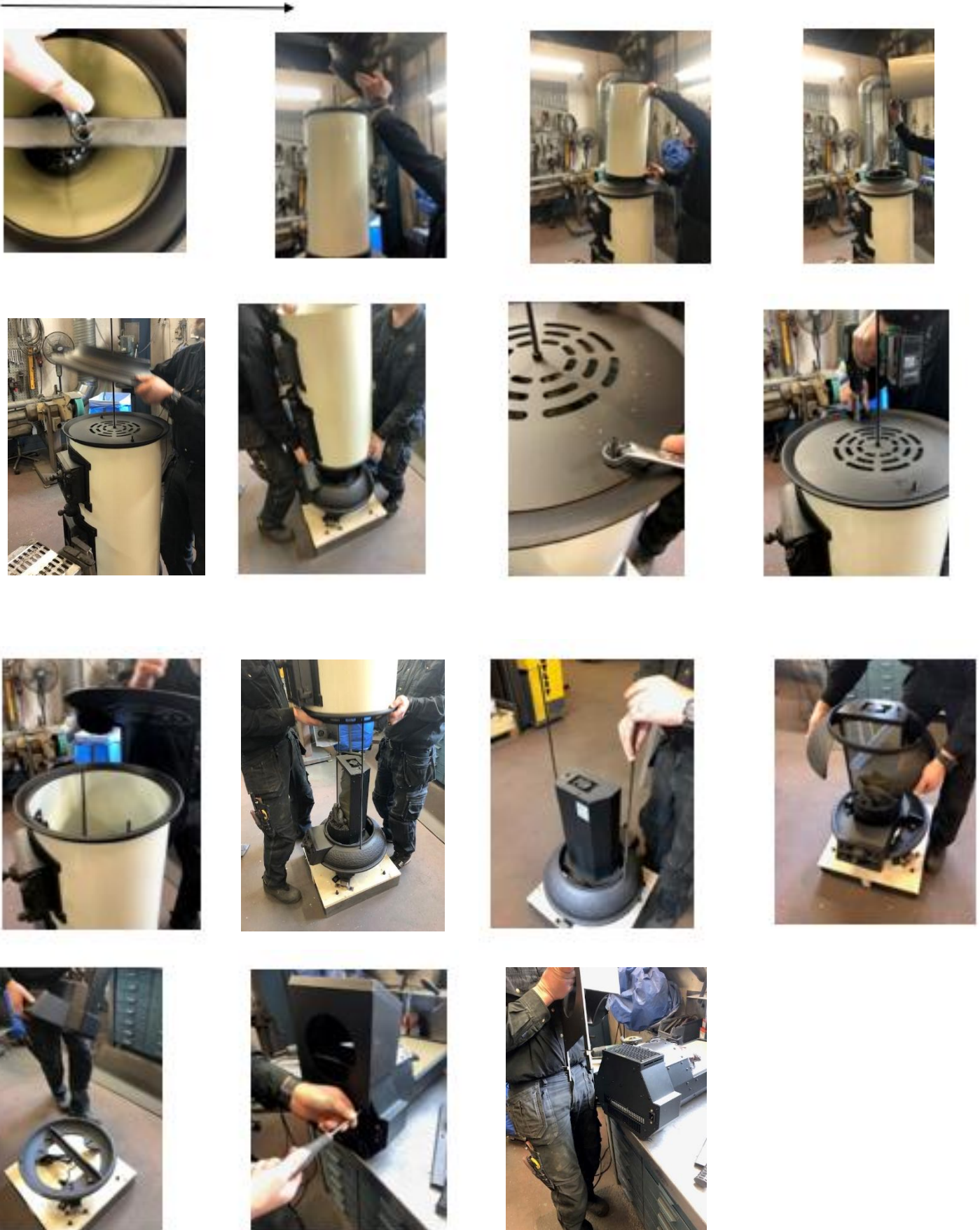


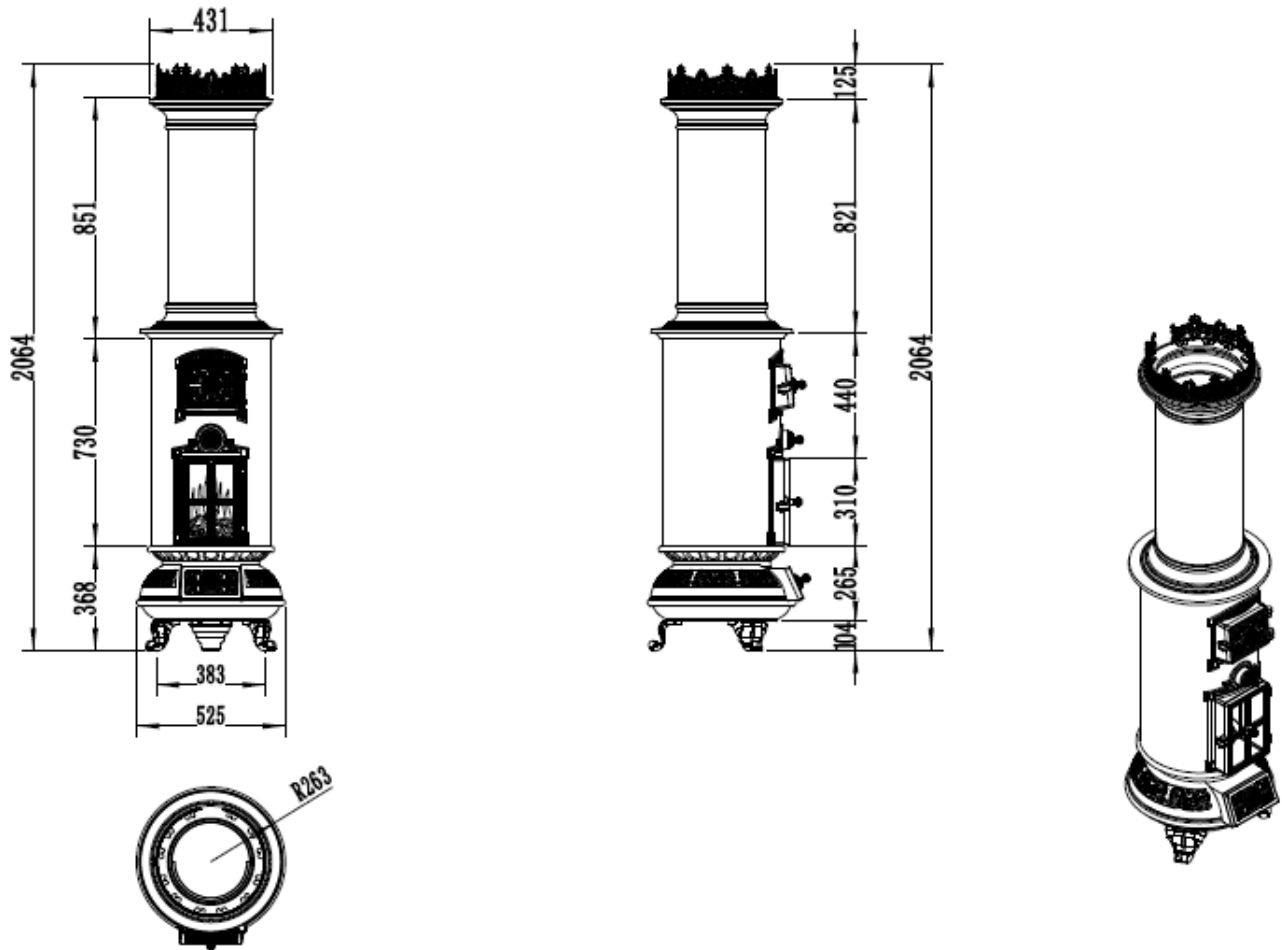
Low heat -
Blue light



High heat -
red light

Instruction for changing electric unit on Classic electric Stove





Technical data

Weight	115 kg
Height	2064 mm
Width	525 mm
Deep	525 mm
Material	Cast iron
Rated voltage	230+/-10V
Heating power	1900/950W
CE – approved	

**NOTE****Maintenance and repair****1. The product cannot be turned on normally.**

- Check whether the power input socket and the power plug are firmly connected to make sure there is power on the socket.
- The electric fireplace is controlled by an infrared remote control. Please check whether the remote-control battery is ok. Battery CR2025 .

2. The product cannot be turned on normally for heating.

- This electronic fireplace has an overheating protection system. If overheating occurs, the system will turn off the heater. If the heater stops working, please turn off the heater and check whether the air intake and exhaust are blocked.
- Unplug the heater, wait for the heater to cool completely, plug in the power to reset the system, and then try to turn on the electric

WARRANTY

Warranty is valid for 1 year from the date of purchase. In the event of a warranty claim, the time of purchase must be supported by a receipt or similar.

Warranty claims must be made to the place of purchase. No warranty is given on the product if it has been modified or rebuilt. Defects/damages caused by negligence on the part of the user are not covered by the warranty.

The warranty applies only to the first buyer and is not included in the sale.



Yours sincerely

Mattias Gunnarsson
Managing director
Westbo of Sweden AB